

Getting to know Europe: Europe on the road

23/10/2018

Building urban resilience through networks and communities: Lessons from Athens, Greece

Anthi Christou

Resilient Communications Manager, City of Athens



HELLO
— FROM —
ATHENS



A new world

The world grows in complexity and uncertainty being affected by global changes:

- Urbanization
- Globalization
- Climate Change

***1,4 million people are moving to cities every week**

A photograph of a city skyline at sunset, viewed from across a body of water. The sky is a mix of blue and orange, and the water reflects the colors. The city buildings are silhouetted against the bright sky.

Urban Resilience

“the capacity of individuals, communities, institutions, businesses, and systems within a city to survive, adapt, and grow no matter what kinds of chronic stresses and acute shocks they experience”

100 Resilient Cities - *Pioneered by the Rockefeller Foundation*



Stresses and shocks

Cities are increasingly vulnerable to:

- **unexpected shocks** (natural disaster as well as financial, social and political crises)
- **chronic stresses** (high unemployment, migratory crises, aging infrastructure etc.)







Greece and Athens

Population:

- Greece: 11 million
- Region of Attica: 3.5 million
- City of Athens: 664.046



Greece and Athens

- ★ A rapidly expanded city
- ★ A densely populated city
- ★ A city in crisis
- ★ Changing demographics: Two waves of migrant and refugee flows
- ★ The metropolitan question in a centralized country
- ★ 80% non-porous surfaces





Greece and Athens

OECD 2017 | 13% of Greeks trust their government

WVS 2018 | 14% of Greeks trust the parliament

**Athens Resilience Strategy 2017 |
Mistrust is a major resilience
challenge for Athens**

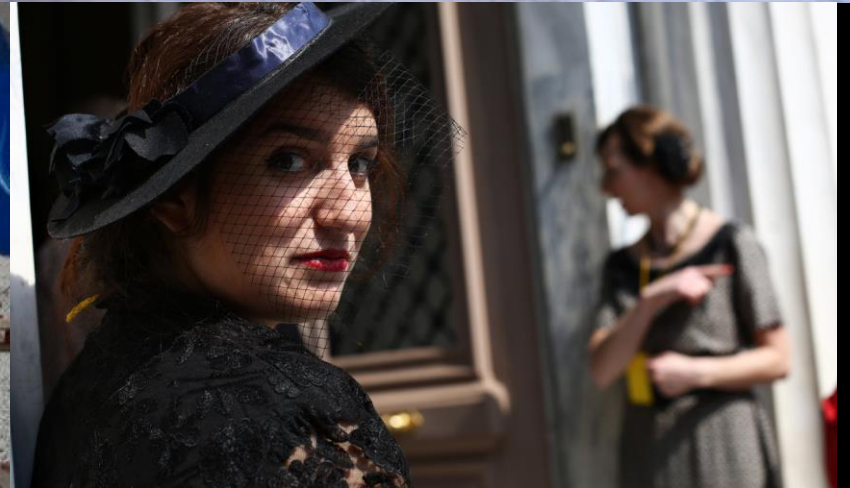


Greece and Athens

- Population: 11 million
- Refugee population in Greece: 50,000+, of whom 38,000 are on the mainland and 11,000 on the islands of Lesbos, Chios, Kos, Samos and Leros.
- Over half are women and children; more than 3,000 are traveling alone.

***IRC report 2018**

54% of Athenians believe that refugees cannot integrate into the Greek society (AORI 2016)





THE CASE OF ATHENS

Athens Resilience Strategy for 2030
Athens Open Schools
Lycabettus Program
Athens Coordination Center for Migrants and Refugees
synAthina
synAthina kiosk
Municipal Market of Kypseli
Polis2
Xouthou Park



Athens Resilience Strategy for 2030

- **Participatory & inclusive process**
- **14 months / 140 organizations in dialogue**
- **counterparts: municipal employees, students, creative entrepreneurs, citizens, artists, bottom-up initiatives**
- **138 opportunities for the City of Athens**
- **65 Resilient Actions and 53 Sub-actions**

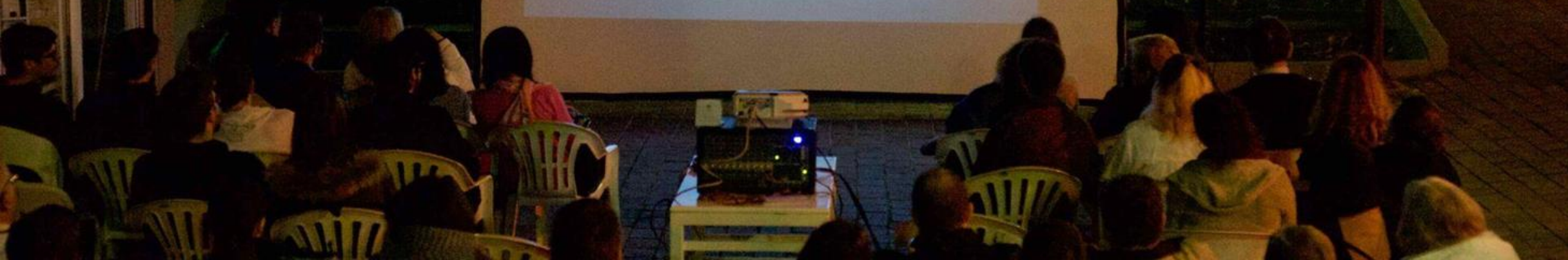


synAthina Kiosk

- A bioclimatic area of 30 m² with outdoors space
- Open 365 days per year, 24 hours per day
- 3 years in a row | since 2015
- Operated by citizens groups | Online Booking

DELICATESSE
ΠΑΡΑΔΟΣΙΑΚΟ **AVRA** ΠΑΝΤΟΠΩΛΕΙΟ
Α. ΚΟΡΑΙΑ

ΓΙΩΓΑΚΗΣ
10 ΤΡΟΦΙΜΩΝ
ΜΠΑΧΑΡΙΚΑ - ΣΟΡΙΑ - ΔΗΜΗΤΡΙΑΚΑ





Xouthou Park

- An urban vegetable garden
- Community building
- Self-management approach of a common space
- Adding new green spaces in the city-center



A panoramic view of a city, likely Athens, Greece, featuring a prominent mountain (Lycabettus) in the background. The city is densely packed with white buildings, and the foreground is filled with lush green trees. The sky is clear and blue, suggesting a bright day. A white banner with black text is overlaid on the image.

Lycabettus Program





10



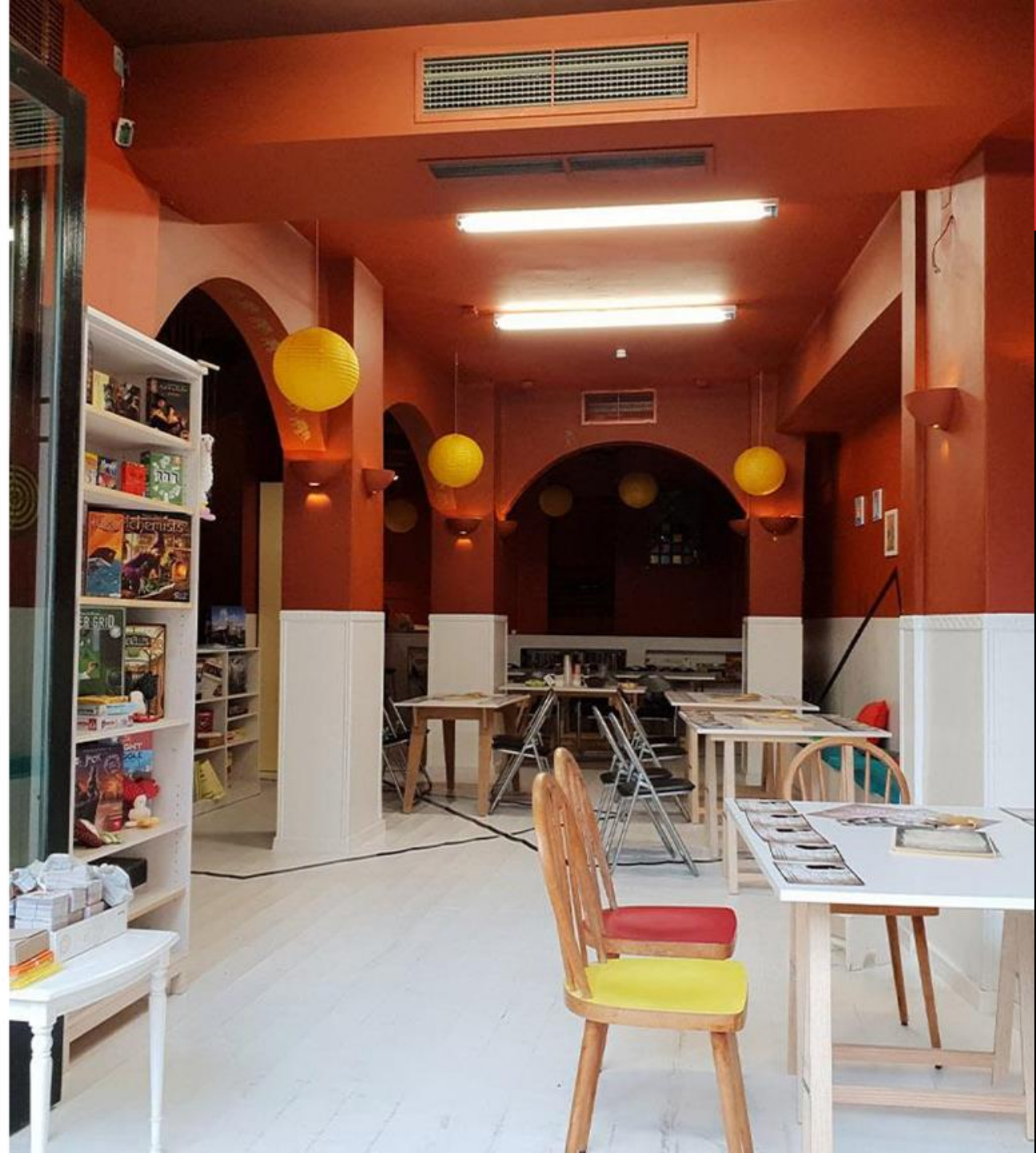
AZADU

NSU

NSU



ΕΤΟΙΜΟΙ ΝΑ
«ΞΑΝΑΖΩΝΤΑΝΕΨΟΥΜΕ» ΕΝΑ
ΚΑΤΑΣΤΗΜΑ
ΣΤΟ
ΚΕΝΤΡΟ;





ΔΗΜΟΤΙΚΗ ΑΓΟΡΑ ΚΥΨΕΛΗΣ



OPEN HOUSE



PANTEBOY
ΣΤΗ
ΦΟΚΙΩΝΟΣ

ΣΗΜΙΟΤΥΠΟ
ΣΤΗΝ
ΑΕΟΡΑ

13

Family
Space

ΕΥΡΩΠΑΪΚΗ
ΕΝΩΣΗ
ΕΥΡΩΠΑΪΚΟ
ΚΟΙΝΩΝΙΚΟ
ΤΑΜΕΙΟ



The Refugee Crisis in the Neighborhoods of Athens

Athens Coordination Center for Migrant and Refugee issues

Curing the limbo | Urban Innovative Action

ESTIA, the Emergency Support to Integration and Accommodation programme (UNHCR - funded by the European Union Civil Protection and Humanitarian Aid)



Aretil
Helsinki

Aretil
Athens

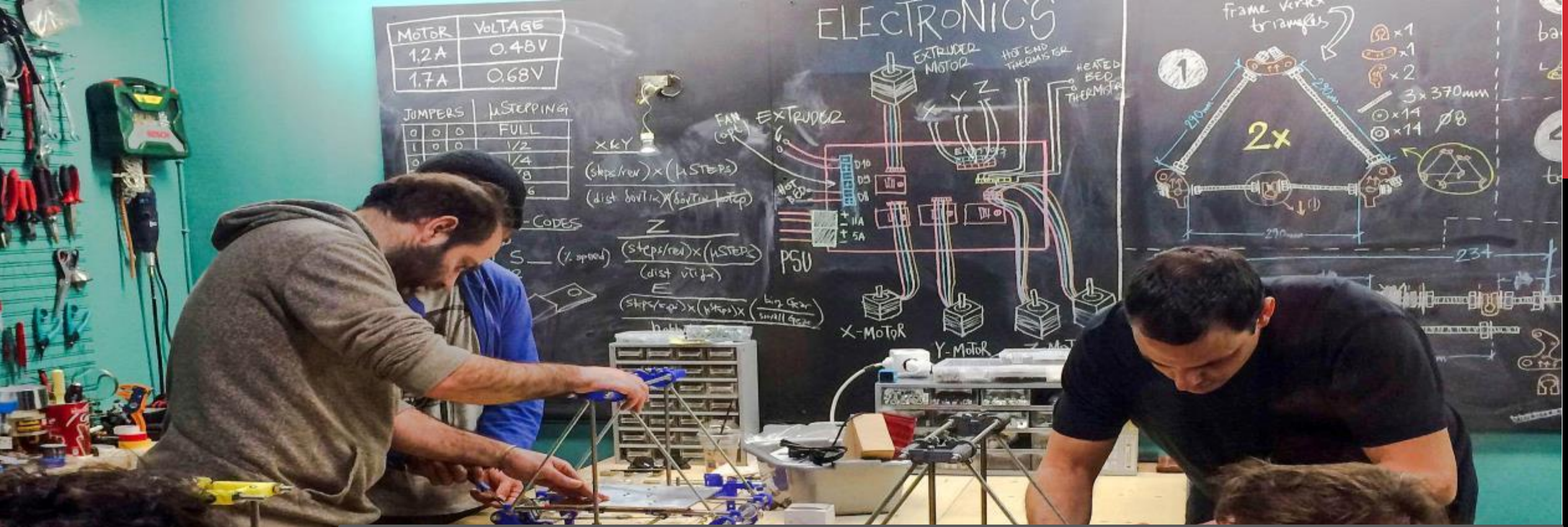
Aretil
Bremen

Aretil
Cluj Napoca

Aretil
Ilga

Athens

- The municipality as the facilitator
- Organized citizens group as local experts
- Capacity building of municipal staff
- The importance of networks



A continuous experiment

For the past 4 years the municipality has opened itself to citizens through networks, projects, initiatives and other ways of engagement.



E-MAIL: anthi.christou88@gmail.com

@AnthiChristou (twitter & linkedin)

#RESILIENTATHENS
#THISISATHENS

