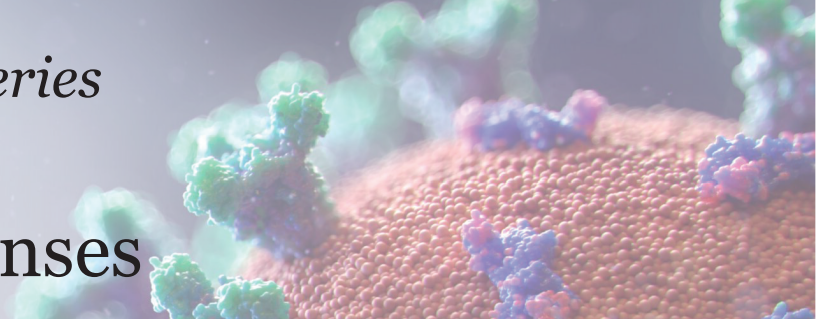


Jean Monnet Chair Webinar Series

Pandemics in Europe: Political & Social Responses



Crisis Signaling: How Italy's Coronavirus Lockdown Affected Incumbent Support in Other European Countries

Catherine De Vries
Bocconi University

Tuesday, October 6, 2020, 12pm EDT

click [here](#) to register

The COVID-19 pandemic is an unparalleled global crisis. Yet, despite the grave adversity faced by citizens, incumbents around the world experienced a boost in popularity during the onset of the outbreak. In this study, we examine how the response to the COVID-19 outbreak in one country has affected incumbent support in other countries. Specifically, we leverage the fact that the first country-wide lockdown on European soil, in Italy on March 9, 2020, happened during the fieldwork of online surveys conducted in four other European countries, France, Germany, Poland and Spain.



Center for
EUROPEAN STUDIES
at the University of Florida

ILLINOIS
European Union Center



Erasmus+

JEAN MONNET
in the USA